

# SIMREX CORPORATION



## Product Series

*Wireless Data Communication*

# System III Series

**S**ystem III wireless data communication series lets you transmit data accurately, reliably and securely, improve flexibility, and provide you with more control over your network. Simple to install, easily expanded and readily upgradable, the System III wireless network can grow with your needs, as new technology expands. System III is a unique combination of digital hardware and powerful software that allows you to structure your network to fit your requirements and upgrade quickly and cost effectively. It forms a powerful communication system that can support many applications, including transaction verification for Automated Teller Machines (ATMs), Point-of-Sale (POS) terminals, Point-of-Banking (POB) terminals, gaming and lottery transactions, as well as basic LAN-to-LAN interconnectivity. Choosing the right path to the wireless future begins with System III.

### Benefits:

- f Remote Network Management Technical Support
- f Simultaneous ATM Display Advertising
- f Cost Effective
- f Reliable
- f Flexible
- f High Speed
- f High Volume
- f Remote Access
- f Modular Design
- f Interoperability
- f Security
- f Variety of Applications
- f Multiple Protocols Supported
- f Powerful Communication Tool

### System III Products:

- f **Intelligent Radio Modem (IRM)** - flexible hardware platform that can be configured as a Terminal Server, Host Server or Network Manager Server via software. It provides the interface from the terminal equipment to the metropolitan area network (MAN). It can serve multiple devices from a single RS232 port and can be remotely configured.
- f **Repeater** - fully redundant Repeater that provides RF coverage within a range of up to 50 km/31 miles. It is fully synthesized and fault tolerant, with no single point of failure and can transmit up to 19.2 kbps in a 25 kHz channel.
- f **Network Manager** - a PC Windows-based program providing real-time display of network activity. Offers network manager full control, including remote software download, monitoring of terminals, reconfiguration, network statistics and more.
- f **CEMA Network Protocol** - supports multiple users and user terminal protocols and can carry more data per channel than any other form of wireless network. Protocols Supported: SNA/SDLC, HDLC, IBM 3270, SLIP/PPP, Asynch. Terminal, X.25/LAPB, TCP/IP and others.

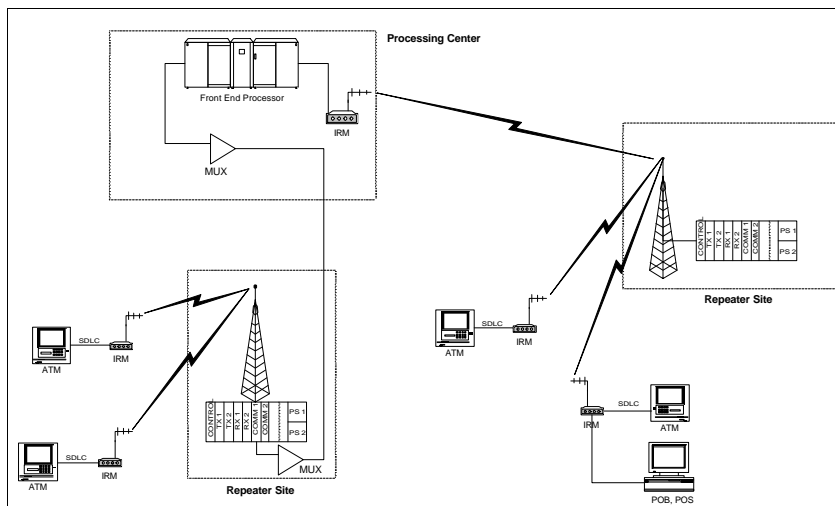


# SIMREX CORPORATION

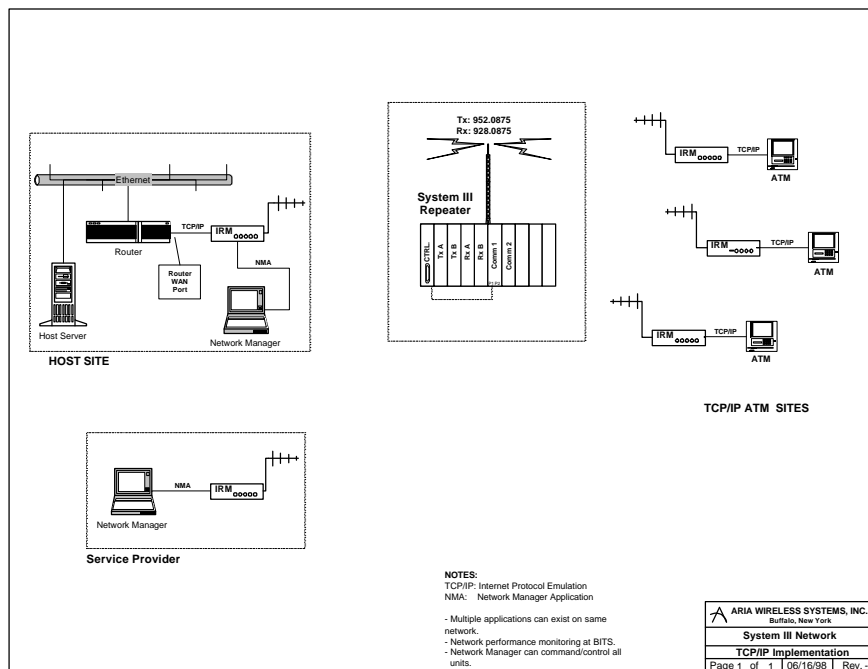


## Product Series Wireless Data Communication

# System III Series



**Typical System III Network Configuration**



## System III - IP Implementation