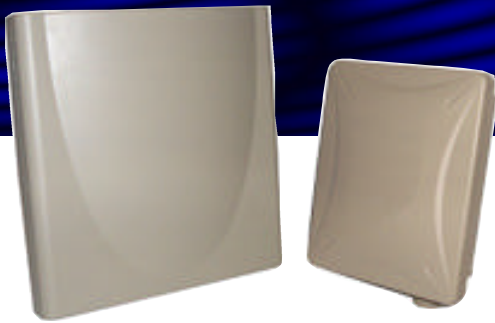


SIMREX Corporation DataMover™ 802.11b/g Outdoor CPE / Bridge with Internal Antenna

2.4 GHz Frequency
802.11b/g Standards
Up to 54 Mbps Data Rate
Watertight and Weatherproof
Built-in Antenna

802.11B/G wireless PERFORMANCE



SIMREX..Global wireless solutions. Wireless Outdoor Bridge

For more than 2 decades, SIMREX Corporation's wireless products have been providing wireless networking solutions with applications in SCADA, telemetry, telecommunications, mobile data and online transaction markets. SIMREX Corporation provides licensed and unlicensed frequency solutions worldwide.

Features

- High Speed Data Rate Up to 54Mbps
- CPE/Bridge with AP/Repeater capability
- Wireless g (OFDM) mode improves non line-of-sight performance
- Backwards compatible to Wireless b
- High TX Output Power and High RX Sensitivity
- Point-to-point, Point-to-multipoint Wireless Connectivity
- SNMP Remote Configuration Management
- WPA2/WPA/ IEEE 802.1x Authenticator support
- NAT support (Client Bridge Mode)
- WDS (Wireless Distribution System)
- Watertight and Weatherproof (IP67)
- MAC address filtering (AP Mode)
- IP/MAC tunneling
- Power-over-Ethernet (IEEE802.3af Compliant)
- Built-in 9 dbi or 16dbi Panel Antenna

Package Contents

- 1x DataMover 802.11b/g
- 1x AC/DC adapter
- 1x Waterproof kit
- 1x Grounding Cable
- 1x Wall mounting kit
- 1x Mast mounting kit
- 1x Active Power over Ethernet injectors
- 1x User manual CD-disc

Product Overview

The DataMover 802.11b/g Outdoor Wireless Multi-Client Bridge/Access Point/WDS (wireless distribution system) operates seamlessly in the 2.4 GHz frequency spectrum supporting the 802.11b (2.4GHz, 11Mbps) and faster 802.11g (2.4GHz, 54Mbps) wireless standards.

The DataMover 802.11g OFDM modulation can significantly improve throughput in non line of sight conditions versus Wireless b.

The DataMover 802.11b/g has high TX output power and high RX sensitivity. These features can extend range and reduce the expense of equipment in the infrastructure. To protect the security of your data, all wireless transmissions may be encrypted through 64/128-bit WEP data encryption and WPA/WPA2/802.1x. The MAC addresses filter and IP/MAC tunneling let you select exactly which remote stations should have access to your network.

Product Benefits

- Capable of handling heavy data payloads such as MPEG video streaming.
- High TX power and high RX sensitivity allow for minimum number of Access Point locations and cost savings.
- Increased operation distance and reduction of roaming between APs for a more stable wireless connection.
- Transfer data between two buildings or multiple buildings.
- Administrators can remotely configure or manage the Access Point easily.
- Powerful data security ensures a secure network connection.
- MAC filter enhances security by insuring the identity of users connected to the client bridge.
- Routing function in client bridge mode.
- Simultaneous wireless AP and Bridge mode for wireless repeater functionality.
- Weather tight IP67 enclosure for outdoor use.
- Built in high gain antenna saves on hardware cost and eliminates external RF cable.
- Easy to install.

* Wireless signal rate based on IEEE standard of 802.11b/g chipset used. Actual throughput may vary. Network conditions and environmental factors lower actual throughput rate.

** All specifications are subject to change without notice.

DATAMOVER™ 802.11b/g Specifications

General

Data Rates	1,2,5.5,6,9,11,12,18,24,36,48,54 Mbps
Standards	IEEE802.11b/g, IEEE802.1x, IEEE802.3, IEEE802.3u, IEEE802.11a/b/g, IEEE802.11g, IEEE 802.11b, IEEE802.11a
Power Requirements	Active Ethernet POE (48VDC/0.7A) External: Autosense 100/240 VAC; 50/60 Hz
Surge Arrestor	20KA Surge Current
Regulation Certifications	FCC Part 15

RF Information

Frequency Band	2.400~2.484 GHz
Radio Type:	Direct Sequence Spread Spectrum (DSSS)
Media Access Protocol	Carrier Sense Multiple Access with Collision Avoidance (CSMA/CA)
Modulation Technology	Orthogonal Frequency Division Multiplexing (OFDM) DBPSK @ 1Mbps DQPSK @2Mbps CCK @ 5.5 & 11Mbps BPSK @ 6 and 9 Mbps QPSK @ 12 and 18 Mbps 16-QAM @ 24 and 36 Mbps 64-QAM @ 48 and 54 Mbps
Operating Channels	11 for North America
RF Connector	SMA Type
Receive Sensitivity (Typical)	-94 dBm @ 1 Mbps -92 dBm @ 2 Mbps -89 dBm @ 5.5 Mbps -92 dBm @ 6 Mbps -90 dBm @ 9 Mbps -86 dBm @ 11 Mbps -88 dBm @ 12 Mbps -86 dBm @ 18 Mbps -83 dBm @ 24 Mbps -79 dBm @ 36 Mbps -74 dBm @ 48 Mbps -72 dBm @ 54 Mbps
RF Output Power:	24dBm @ 1,2,5.5,11 Mbps 23dBm @ 6,9,12 & 18 Mbps 22dBm @ 24 & 36 Mbps 21dBm @ 48 & 54Mbps

Antenna 9dBi or 16dBi Internal Flat Panel Directional Antenna

All specifications are subject to change by Simrex without prior notice

Networking

Topology	Ad-Hoc, Infrastructure
Operation Mode	Point-to-Point/ Point-to-Multipoint Bridge/ AP/ Client Bridge/Repeater/ WDS
Interface	1x 10/100 Mbps RJ-45 LAN Port
Supported OS	WIndows 98SE, ME, 2000, XP
Roaming	IEEE802.11b compliant
Security	IEEE802.1x authenticator / RADIUS client (EAPMD5/TLS/TTLS) support in AP mode WPA2/WPA / Pre Share KEY (PSK)/ AES/TKIP MAC address filtering Layer 2 isolation Hide SSID in beacons DHCP Client/Server VLAN tunneling support

Management

Configuration	Web-based configuration *HTTP Telnet configuration SNMP V1/V2C* MIB I, MIB II, Private MIB
Firmware Upgrade	Upgrade firmware via webbrowser

Physical

9 dBi Antenna Version

Dimensions	6.4" (L) x 5.3" (W) x 2.1" (D) 162.6mm(L) x 134.6mm(W) x 53.3mm (D)
Weight	2.5 lbs. (1.2 Kg)

16 dBi Antenna Version

Dimensions	7.8" (L) x 7.8" (H) x 3.4" (D) 198.1mm(L) x 198.1mm(H) x 86.3mm (D)
Weight	4.2 lbs (2.0 Kg)

Environmental

Temperature Range	Operating: -20°C to 70°C Storage: -40°C to 80°C
Humidity (non-condensing)	5%~95% Typical

Package Contents:	<ul style="list-style-type: none"> • DataMover 802.11b/g Outdoor Wireless Client Bridge unit • 48V, 0.375A AC/DC adapter with wall plug power cord • Inline Power Injector (PoE) • 1.8m Grounding Cable • User's manual CD-ROM • Wall mounting kit • Mast mounting kit • Waterproof kit
-------------------	---

SIMREX CORPORATION

SALES & ENGINEERING
2120 E. NANTUCKETT DRIVE
GILBERT, ARIZONA 85234 USA
PHONE (480) 926-6069
FAX (305) 675-7794

MANUFACTURING & SERVICE
5490 BROADWAY ST.
LANCASTER, NEW YORK 14086 USA
PHONE (716) 206-0174
FAX (716)-204-0476