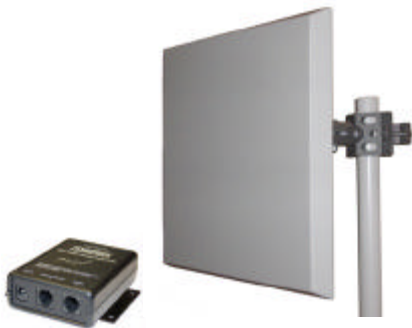


SIMREX Corporation

DataMover™ SS-ODU Package

902-928 MHz
2.406-2.482 GHz
Frequency Hopping
Spread Spectrum
Integrated Transceiver

UNLICENSED wireless DATA



RADIO FEATURES

- High Speed. Throughput to 115.2 Kbps
- Unparalleled Robustness
 - Forward error correction
 - CRC/ARQ, multiple re-sends
- Opto-Isolated from controller RS232 port
- Industrial Grade - Extended -40 to +70 degrees C temperature range for trouble free operation in extreme environments
- Sleep mode - ~ 3mA, ideal for solar power applications
- Store and forward - with self healing networks
- Network wide diagnostics - Central network control without the need to visit sites

Antenna/Enclosure

- Professional mounting kit that allows both wall and pole installation and both azimuth and elevation control
 - Built to IP-67 enclosure requirements to withstand all electrical and environmental issues
 - Integral Panel Antenna
 - 900 MHz - 12.5 dBi Gain
 - 2.4 GHz - 19 dBi Gain
 - Eliminates unnecessary electrical and RF points of failure
- Unlicensed / Wireless / Data

SIMREX..Global wireless solutions. Unlicensed Wireless Data

For more than 2 decades, SIMREX Corporation's wireless products have been providing wireless networking solutions with applications in SCADA, telemetry, telecommunications, mobile data and online transaction markets. SIMREX Corporation provides licensed and unlicensed solutions, installed worldwide.

Product Overview

The SIMREX Corporation DataMover SS-ODU utilizes FHSS (Frequency Hopping Spread Spectrum) in the ISM Bands of 902-928 MHz or 2.406-2.482 GHz to provide reliable long range data transportation at up to 115.2 Kbps. The DataMover SS-ODU provides transparent data communications for nearly all SCADA / Telemetry and EFM protocols including MODBUS.

Any DataMover SS-ODU can be configured as a repeater extension. This allows store and forward data operation to extend the operation range of the network. Multiple repeaters can exist at any level of the network preventing a single radio failure from disabling the entire network. There is no limit to the number of repeaters that can be used. This product is available for use in Class 1, Division 2, Groups A, B, C & D hazardous locations. *

Why Consider a DataMover SS-ODU Solution?

- **High system performance and data integrity.** Robust construction, digital signal processing [DSP] technology with self-equalization, automatic CRC/ARQ and powerful forward error correction.
- **Flexibility and rapid installation.** Quick return on investment due to plug-and-play installation. License-free radio design with the ability to communicate with any asynchronous protocol without extra software or additional programming.
- **Performance under the most adverse conditions.** Robust design provides excellent performance in the face of interference or difficult signal paths.
- **SIMREX network-wide diagnostics software** simplifies tasks and reduces the cost of managing the network infrastructure by eliminating trips to the field. Provides a non-intrusive means of maintaining link and radio network performance.
- **Opto-Isolated Flexible interfaces.** All DataMover SS-ODU come equipped with Opto-Isolated RS-232 for direct connection to most RTU/PLC's.
- **Low Power consumption.** Sleep mode for extremely low power consumption requirements - radio typically draws 3mA - yet still recovers quickly for fast access to your critical data.
- **SIMREX DataMover SS-ODU is a price/performance leader** offering flexibility and reliability for both point-to-point and point-to-multipoint requirements.

Applications

- SCADA
- Tested and approved to work with Schweitzer Engineering Laboratories [SEL] Mirrored Bits™
- Industrial Automation
- Process Control
- Gas and Oil Exploration, Production and Transportation
- Electric, Water and Gas Utilities

DataMover™ SS Radio/ ODU Specifications

Frequency Band	902-928 MHz ISM Band 2.406-2.482 GHz ISM Band		
Physical and Environmental			
Input Power	6 to 30 Vdc		
Current Drain	<u>Mode</u>	<u>30Vdc</u>	<u>13.8Vdc</u> <u>6Vdc</u>
	Transmit	236 mA	510mA 1.18A
	Receive	51 mA	100mA 155mA
Sleep Mode	3 mA typical		
Temperature Range	-40 to +70 degrees C		
Humidity	< 95% RH (Non-condensing)		

Transmitter

Power Output (user selectable)	SS-900: .1 Watt to 1 Watt (20 dBm to 30 dBm) at 6Vdc to 30Vdc SS-2.4: .1 Watt to .5 Watt (20 dBm to 27 dBm) at 6Vdc to 30Vdc
Modulation	CPFSK

Receiver

Sensitivity	-108 dBm (1 x 10 ⁻⁶ BER) typical
Error Detection	CRC16; Resend on Error
Interference Avoidance	64,000 hop patterns selected automatically via network address FEC, CRC/ARQ and/or Multiple Packet Transmits Excellent Strong Signal (interference) Characteristics Band Segmentation for Friendly Coexistence with Other Services such as LMS

Data

Interface	RS-232
Usable Throughput	115.2 kbps
Port Speeds	1.2 to 115.2 kbps

Operating Modes

Point-to-Multipoint	Master or Remote Repeater Extension (Store and Forward) - Unlimited repeaters - self healing networks
---------------------	--

* The transceiver is not acceptable as a stand-alone unit for use in hazardous locations described above. It must either be mounted within another piece of equipment, which is certified for hazardous locations, or installed within guidelines, or conditions, of approval, as set forth by the approving agencies.

Network Management

Diagnostics
Centralized network control eliminates site visits
Create store-and-forward configurations
Compatible with other Simrex products

Integrated Antenna Specifications

Antenna Gain	900 MHz 12.5 dBi 2.4 GHz 19 dBi
Size	391 x 391 x 43 mm 15.4 x 15.4 x 1.7 in
Enclosure Weight	1.1Kg 2.75 lbs
Connectors (Options)	RJ45, N-TYPE,
Enclosure Material	Aluminum
Fasteners	Stainless Steel
Mounting	Both wall and pole mount [see detail drawing]
AZ/EL control	Both
Pole Size	0.75in to 3.0in (1.9cm to 7.6cm)
Temperature	-40°C to 70°C
Humidity	100%
Water Tightness	IP-67
Wind Load (Survival):	125mph (201kph)

Agency Approvals

FCC UL/CSA IC	Part 15 Approved Class 1, Div. 2 approved* (UL 508, UL 1604) Approved
---------------------	---

SIMREX CORPORATION

SALES & ENGINEERING

GILBERT, ARIZONA 85234 USA
PHONE (480) 926-6069
FAX (305) 675-7794

WWW.SIMREX.COM

MANUFACTURING & SERVICE

1223 WILLIAM ST.
BUFFALO, NEW YORK 14206 USA
PHONE (716) 206-0174
FAX (716) 852-1223

SIMREX DataMover products are manufactured under a quality system certified to ISO 9001. SIMREX reserves the right to make changes to specifications of products described in this data sheet at any time without notice and without obligation to notify any person of such changes.

© 2004 SIMREX Corporation

2131015